

# Introducing **The Clare**



**4,136 Sq. Ft. | 4 Bedrooms - 3.5 Baths - 3 Car Garage**

Welcome to The Clare, our 2024 MBA Parade of Homes Model. Step through the large welcoming Foyer and feel the spaciousness surround you. On your left, is a versatile Flex Room, offering endless possibilities for use, whether as a home office, study, or playroom.

Continue into the heart of the home and find yourself in the expansive Great Room that features a contemporary electric fireplace that connects seamlessly to the Kitchen and Dinette. This open layout is perfect for gatherings, allowing for easy conversation flow and effortless entertaining. The well-equipped Kitchen is a chef's delight, with ample counter space, modern appliances, and a layout designed for efficiency and direct access to the Rear Foyer and the Laundry Room featuring innovative storage and pet amenities

A major highlight of the home is the Screened Porch featuring high ceilings and a gas fireplace, accessible from the Dinette or Primary Bedroom. Retreat to the luxurious Primary Bedroom Suite, featuring soaring ceilings with an electric fireplace in the main area. The expansive Primary Bath features a beautiful tiled shower as well as a free standing tub. This is also where you'll find a spacious Walk-In-Closet.

The Clare boasts a 3-car side Garage, offering plenty of space for vehicles and storage. With its generous proportions, this Garage provides ample room for keeping your home organized and clutter-free.

As Wisconsin's leading high performance homebuilder, Tim O'Brien Homes constructs single-family homes in Madison and Milwaukee with a focus on positively impacting lives. Our dedicated team not only forges genuine connections with homeowners to create dream homes but also understands the importance of trust and communication by providing thorough, educational updates throughout the process and ensuring meticulous execution.

Tim O'Brien Homes has established itself as the go-to homebuilder for an extraordinary experience, delivering high performance homes that excel in energy efficiency and indoor air quality. We have received the Housing Innovation Award from the U.S. Department of Energy for six consecutive years, recognizing our leadership in these areas. This commitment has earned us a ranking among the **top 1% of builders nationwide**, certified by the U.S. Department of Energy.



***The Clare Parade Home is a stunningly spacious ranch, seamlessly blending elegance and modern style.***



# The Clare

4,136 Sq. Ft.

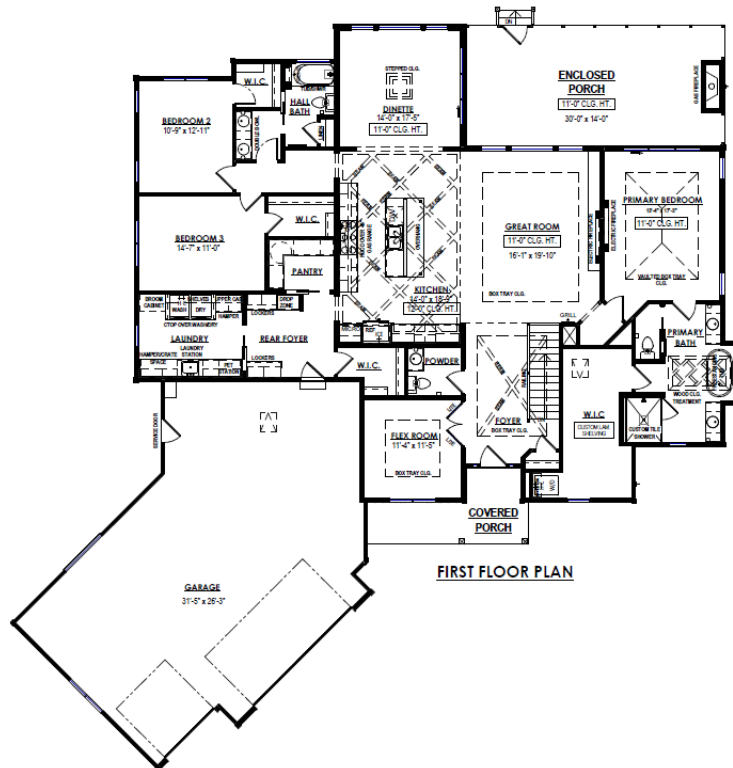
4 Bedrooms - 3.5 Baths - 3 Car Garage



The 2024 Clare Parade Model is showcased with a mix of preplanned options and personalized features.

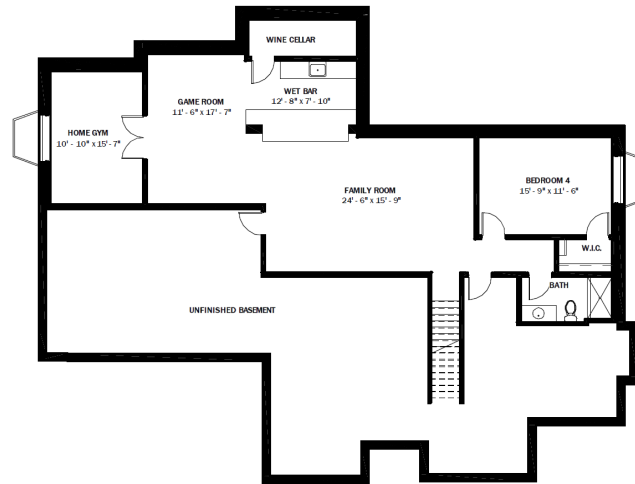


Home Plans



FIRST FLOOR PLAN

**First Floor**  
2,758 sq. ft.



**Basement**  
1,378 sq. ft.

## The Tim O'Brien Homes Difference:

- The knowledge and passion of our dedicated team members that provide an EXTRAordinary Experience
- The building science that creates the best in efficiency and comfort
- A design team that creates award-winning homes
- A fully-equipped Design Studio where you can choose your dream finishes

## Uncompromising Details Always Included:

- Complete Duct Cleaning & Aeroseal® Duct Sealing for Superior Indoor Air Quality
- EPA Indoor airPLUS® Certified
- ENERGY STAR® Certified
- Total wall R-value (R-21)
- R-50 blown-in batt attic insulation
- Active radon venting
- ERV: Fresh Air System
- Hybrid electric water heater
- 100% of our homes are 3rd party tested and certified ensuring a sound investment now and in the future
- 1-Year complete workmanship and material warranty
- 5-Year Energy Guarantee
- 10-Year Limited transferable warranty, adding to your home's resale value
- Closed cell foam in the basement box sill and attic penetrations creating an air-tight seal where 70% of a home's energy can escape
- Improved Indoor Air Quality with direct vent exhaust fans in kitchen and full baths



**Enjoy a Healthier, More Comfortable Home.**  
Each home proudly holds EPA Indoor airPLUS & Energy Star certifications.  
Your smart choice for superior indoor air quality and energy efficiency.



*Our Core Purpose*  
**Positively Impacting  
People's Lives**



# FINAL COLOR ADDENDUM

To Agreement of Purchase of New Home between Tim O'Brien Homes and Customer identified below.

Customer Names:	Tim O'Brien Homes	Design Professional	Kaylin Nick
Color Selection Appt:	10.11.23	New Home Sales Professional	Emily Feagles
Neighborhood:	Fox River Falls (93)	Deadline	11/22/2023
Home Plan:	Clare	Job #:	93-029

ROOFING	PRODUCT	COLOR	OTHER DETAILS
Shingles	Dimensional	Driftwood	

SIDING AND TRIM	PRODUCT	COLOR	OTHER DETAILS
Siding - Main Exterior	6" James Hardie Hardboard Siding	Mountain Sage	
Siding - Gable Vertical Accents	James Hardie Hardboard Board + Batten Siding	Mountain Sage	
Fascia	Aluminum Fascia	Craftsman Bronze	
Soffits	Aluminum Soffit	Craftsman Bronze	
Gutters	Alcoa	Craftsman Bronze	
Gable Bracket Detail	Painted	Toasty SW6095	
Exterior Window Trim	Hardboard Window Trim	Painted to Match Mountain Sage Siding	
Exterior Corner Trim	Hardboard Corner Board Trim	Painted to Match Mountain Sage Siding	
Exterior Porch Post Trim	Painted	Toasty SW6095	
Screen Porch Posts	Painted	Painted to Match Mountain Sage Siding	

WINDOWS/PATIO DOOR	PRODUCT	COLOR	GRILLES	LOCATION/DETAILS
Windows	Alliance Vinyl Windows	Dark Bronze/White	Full Colonial	Front Elevation Only
Patio Door	Alliance Vinyl Windows	Dark Bronze/White	No Grilles	

EXTERIOR MASONRY	PRODUCT	COLOR	OTHER DETAILS
Stone Selection	Natural Stone	Tumbled Brookfield With Flush Mortar	Bedford Sill Cap
Interior Masonry	TBD		Stone Arched Wall Around Basement Bar



EXTERIOR DOORS		PRODUCT	EXTERIOR COLOR	INTERIOR COLOR	GLASS OPT.	DETAILS
Front Entry Door	X	CCA2310	Tavern Oak SW3573	Tricorn Black SW6258	Clear Glass (Included)	
Sidelites - Front Door	X	CCA2400SL	Tavern Oak SW3573	Tricorn Black SW6258	Clear Glass (Included)	
Garage Entry Door (Firedoor)		SSF120 - 1 Panel	Tricorn Black SW6258	Tricorn Black SW6258		
Garage Service Door		S1100 - 1 Panel Flat	Painted to Match Mountain Sage Siding	Tricorn Black SW6258		
Overhead Garage Doors	X	Carriage Style Wood Accent - Long Stamp 5983	Cedar		Windows: Stockton	Spade Decorative Hardware - Flat Black (Included)
Screen Porch Storm Door		Anderson - Fullview	Black	Black	Clear Glass	Bronze Hardware

GREAT ROOM FIREPLACE		PRODUCT	COLOR	OTHER DETAILS
Fireplace Unit	X	Evolve 50	Black	Clean Face
Fireplace Face Selection	X	Natural Quartz Stone	MSI - Premium Black Stacked Stone	Extend Natural Stone Face to Ceiling
Fireplace Hearth Selection		No Hearth		Raise Box Above Wood Bench
Fireplace Mantle		Magra Hearth Mantle	Color & Style TBD	
Fireplace Bench Details		Wood Stained Wrap Around Bench	Color TBD	
Fireplace Details		Wood Fireplace Bench extends all the way to the left wall		

PORCH FIREPLACE		PRODUCT	COLOR	OTHER DETAILS
Fireplace Unit	X	Gas Fireplace Kingsman - Bentley ZCV48N	Black	Clean Face
Fireplace Face Selection	X	Natural Stone	Tumbled Brookfield with Flush Mortar	Extend Culutred Stone Face to Ceiling
Fireplace Hearth Selection		No Hearth		Raise Fireplace Box 12"
Fireplace Mantle Details	X	Magra Hearth	RBW-5-BRN - Brown with Magra Corbles	

PRIMARY BEDROOM FIREPLACE		PRODUCT	COLOR	OTHER DETAILS
Fireplace Unit	X	Evolve 50	Black	Clean Face
Fireplace Face Selection	X	Natural Quartz Stone	Arctic White Quartz	Tile Installed to Ceiling
Fireplace Hearth Selection		No Hearth		Raise Fireplace Box 12"
Fireplace Mantle Detail		None		

DRYWALL & PAINT		PRODUCT	COLOR	STYLE	LOCATION
Drywall Texture		Knockdown			
Drywall Texture	X	Smooth Drywall	Custom Paint TBD		Back Wall of Flex Room, Bedroom 3, Powder Room
Ceiling & Wall Paint Color	X	Flat Paint	Custom Paint TBD		

Tray Ceilings	X	Flat Paint	Custom Paint TBD		
Drywall Corners		Square			
Additional Wall Painting	X	Flat Paint	Custom Paint TBD		
Interior Trim Paint/Stain		Painted Trim	Pure White SW7005		
Flex Room Crown Molding		3" Shaker Crown	TBD		
Foyer Crown Molding		3" Shaker Crown	Briar	Shaker	
Kitchen Crown Molding		3" Shaker Crown	Briar	Shaker	
Great Room Crown Molding		3" Shaker Crown	Pure White SW7005	Shaker	
Primary Bath Crown Molding		3" Shaker Crown	Pure White SW7005	Shaker	
Primary Bedroom Crown Molding		3" Shaker Crown	Pure White SW7005	Shaker	
Additional Woodwork Staining/Paint	X	1x2 Geometric Accent Wall	TBD		Back Wall of Flex Room
Additional Woodwork Staining/Paint	X	Plywood Base with Beams & Crown	Briar		Kitchen Coffered Ceiling
Ceiling Beams	X	Wood Stained Beams	Briar		Foyer and Kitchen
Great Room Trim Details	X	Vertical Stained Wood Slat Wall	Briar		Great Room - Left of Fireplace
Foyer Trim Details	X	Wainscotting	TBD		Foyer by Stairs
Bedroom 3 Trim Details	X	Wainscotting	TBD	Board & Batten Style 3/4's Up Wall	All Walls in Bedroom 3
Bedroom 2 Trim Details	X	1x2 Chair Rail	TBD		Installed around all walls in Bedroom 2 - 1' down from ceiling
Primary Bedroom Trim Details	X	1x2 Chair Rail	TBD		Installed around all walls in Bedroom 2 - 1' down from ceiling
Primary Bath Ceiling Details	X	Painted Trim Details	TBD		
Poch Ceiling	X	WoodTone Tongue and Groove	Texas Honey Brown		
Primary Bedroom Ceiling Detail	X	WoodTone Tongue and Groove	TBD		

INTERIOR TRIM & HARDWARE		PRODUCT	Style	Color	Other Details
Interior Doors	X	Solid Core Painted	1 Panel - Stile and Rail	Tricorn Black SW6258	
Pantry Doors	X	Glass Pantry Door	Reeded Glass	Tricorn Black SW6258	
Basement Gym Door	X	Painted French Door	1 Lite - Clear Glass	Tricorn Black SW6258	
Flex Room Door	X	Painted French Door	1 Lite - Clear Glass	Tricorn Black SW6258	
Interior Trim Package	X	Painted	Casing-#432J Flat Profile (9/16" x 3 1/2") Base-REB430MDF (1/2" x 4 1/4") (L3A)	Pure White SW7005	Door Jambs will be painted white to match trim
Interior Window and Door Trim		Painted	Wood Window Jamb and Casing	Pure White SW7005	Not all doors and windows have cased openings - see plan for locations
Open Railing - Rail and Newels		Included Newel Posts - 3 1/2" #4000-CH (Chamfered Top) Square Newel Post	Stained	Briar	

Opening Railing - Balusters	X	Horizontal Tube Railing	Aluminum	Black	
Handrail		Stained Wood		Briar	
Stair Skirt Boards		Painted Wood		Pure White SW7005	
Door Hardware	X	Schlage	Latitude Lever x Collins Trim	Satin Brass	Decorative Century Front Door Handle with the Century Encode Smart Deadbolt - Matte Black
Interior Trim & Hardware Notes					

ELECTRICAL & LIGHTING		PRODUCT	COLOR	LEVEL	NOTES
Foyer Lighting		Vesper 26031SWSBRBK	Black Marble/Gold	Custom	
Flex Room Lighting		39655SHBZ	Honey Bronze	Custom	
Dinette Lighting		Flambeau - 16129CLBKAB	Black/Gold	Custom	
Great Room Wall Sconce		Nordic - WS11350TNBK	Black/Leather Strap	Custom	
Kitchen Island Lighting		Nucleus E25154-BKNAB	Black/Aged Brass	Custom	2 Centered On Kitchen Island
Primary Bath Lighting		32391OFSBRPN	Satin Brass/Polished Nickel	Custom	
Hall Bath Lighting		Carpenter 21623CLWNBK	Walnut/Black	Custom	
Powder Room Lighting		Fuse E23442-10NAB	Natural Aged Brass	Custom	
Basement Bath Lighting		Fuse E23442-10BK	Black	Custom	
Basement Bar Pendant Lighting		Mermaid E21448-BKMG	Black/Gold	Custom	2 Centered on Bar Overhang
Rear Foyer Lighting		Duo SM162284CLSWBK	Clear/Black	Custom	
Laundry Room Lighting		Duo SM162284CLSWBK	Clear/Black	Custom	
Pantry Lighting		Duo SM162284CLSWBK	Clear/Black	Custom	
Great Room Ceiling Fan		Daisy 88826BKGLD	Black/Gold	Custom	Ceiling Fan + Light Kit
Bedroom 2 Ceiling Fan		Tanker 88803BK	Black	Custom	Ceiling Fan + Light Kit
Bedroom 3 Ceiling Fan		Daisy 88826WTNAB	White/Gold	Custom	Ceiling Fan + Light Kit
Primary Bedroom		Chimz Wiz E34207-BKSBR	Black/Gold	Custom	Ceiling Fan + Light Kit
Primary WIC		Dapper 59702WTBKAB	Black/Brass	Custom	
Basement Bunk Beds Sconce		Helsinki - 11431NAB	Natural Aged Brass	Custom	
Basement Above Game Table		Rollo E24943-APBK	Black/Walnut	Custom	
Porch Ceiling Fan		Ultra Slim 88807BK	Black	Custom	Ceiling Fan Only
Garage Coach Lights		10313CLBZGLD		Custom	
Service Door Coach Light		10312CLBZGLD		Custom	
LED Decorative Lighting	X	LED Puck Lights		2 inside each floating shelf in kitchen	
LED Decorative Lighting	X	LED Tape Lighting		See Plan for Location	
Wall Switch and Outlet Plates		Rocker	White		
Island Outlet (if applicable)		GFI Outlet(s)	Black		
Kitchen Backsplash Outlets		Location: Backsplash	White		

CABINETS & VANITIES		PRODUCT	COLOR	DOOR STYLE	LEVEL	CROWN MOLDING	HARDWARE
Upper Kitchen Cabinets	X	Countryside - Hickory - Stacked Upper Cabinets to Ceiling	Briar - HICKORY	London	Level 3	SCRWN3 (Shaker)	Ascendra - TK704HB on all Doors
Perimeter Lower Cabinets	X	Countryside - Maple	Jet	London	Level 3		Ascendra Pull TK704HB on doors & small drawers (TK708HB 12" Pull on all Larger Drawers)
Kitchen Island Cabinets	X	Countryside - Maple	Jet	London	Level 3		Ascendra Pull TK704HB on doors & small drawers (TK708HB 12" Pull on all Larger Drawers)
Kitchen Countertop Cabinets	X	Countryside - Hickory - Stacked to Ceiling	Briar - HICKORY	London	Level 3	SCRWN3 (Shaker)	Ascendra - TK704HB on all doors
Countertop Cabinet Notes	X	Large Center Doors will have Seedy Glass - Glass shelves inside of cabinets instead of wood					
Stanisci Wood Hood	X	E Series (E Simple) Curved with Straight Vallance	Jet			SCRWN3 (Shaker)	
Kitchen Floating Shelves	X	Countryside - Maple	Jet				
Drop Zone	X	Countryside - 42" Uppers	Jet	London	Level 3	SCRWN3 (Shaker)	Ascendra - TK704HB on all doors & drawers
Pantry Cabinets	X	Countryside - Maple	Jet with Jet Floating Shelves	London	Level 3		Ascendra - TK704HB on all doors & drawers
Primary Bath Vanity	X	Countryside - Hickory - Comfort Height - Floating Vanity	North Pier - HICKORY	London	Level 3		Exeter - TK873HB on all doors & drawers
Main Hall Bath Vanity	X	Countryside - Hickory - Standard Height	Briar - HICKORY	Lexington MFO	Level 2		Lawrence - TK3211BSN on all doors & drawers
Powder Room Vanity	X	Countryside - Maple - Comfort Height - Floating Vanity	Jet	Townhouse	Level 2		Exeter - TK873HB on all doors
Locker Package Cabinets	X	Countryside - Maple	Jet Cabinets with Bench Seat stained BRIAR HICKORY	London	Level 3	SCRWN3 (Shaker)	Ascendra - TK704HB on doors & drawers - Juliet Hooks TK1060HB
Laundry Drop In Sink Cabinets	X	Countryside - Maple	Jet	London	Level 3		Ascendra - TK704HB on all doors & drawers
Laundry Upper and Lower Cabinets	X	Countryside - Maple	Jet	London	Level 3	SCRWN3 (Shaker)	Ascendra Pull TK704HB on doors & small drawers (TK708HB 12" Pull on all Larger Drawers)
Laundry Room Open Shelves	X	Countryside - Hickory	Briar - HICKORY				
Toilet Topper Cabinets	X	Countryside - Maple	Finish to Match Bathroom Cabinetry	Style to Match Bathroom Cabinetry		SCRWN3 (Shaker)	Hardware to Match Bathroom Cabinetry
Basement Bar Cabinets	X	Countryside - Maple	Jet	Austin	Level 3		TK972HB on all doors and drawers
Basement Bath Vanity Cabinets	X	Countryside - Maple	Bisque	Austin	Level 3		TK972HB on all doors and drawers
Decorative End Panels	X	Yes - Finish and Style to Match Cabinetry		All sides of Kitchen Island and Perimeter Lowers			
Decorative Glass	X	Seedy		Added to Countertop Cabinets in Kitchen			

COUNTERTOPS		PRODUCT	COLOR	EDGE	LEVEL	BACKSPLASH NOTES
Kitchen Countertop	X	Quartz	Calcatta Idillio	1/4 Round	Level 3	Full Height Splash on Range Wall-4" Splash Between Countertop Cabinets on Fridge Wall Only
Kitchen Island Countertop	X	Quartz	Calcatta Idillio	1/4 Round	Level 3	
Kitchen Island Overhang	X	24" Quartz Flush Overhang with Wood Apron and 2 Metro Furniture Legs (larger legs)	Calcatta Idillio	1/4 Round	Level 3	
Drop Zone Countertop	X	Quartz	Calcatta Idillio	1/4 Round	Level 3	
Basement Bar Countertop	X	Granite	Nero Mist Honed	1/4 Round	Level 3	Eliminate 4" Backsplash
Basement Bar Overhang	X	10" Granite Flush Overhang	Nero Mist Honed	1/4 Round	Level 3	
Primary Bath Vanity Top	X	Quartz	Calcatta Idillio	1/4 Round	Level 5	4" Countertop Backsplash
Main Hall Bath Vanity Top	X	Quartz	Calcatta Breve	1/4 Round	Level 2	4" Countertop Backsplash
Powder Room Vanity Top	X	Quartz	Calcatta Idillio	1/4 Round	Level 1	4" Countertop Backsplash
Basement Bath Vanity Top	X	Quartz	Calcatta Izaro	1/4 Round	Level 1	4" Countertop Backsplash
Pantry Countertop	X	Butcher Block	Hickory	Flat Edge		Credit and Remove 4" Countertop Splash
Laundry Countertop	X	Quartz	Calcatta Idillio	1/4 Round	Level 1	4" Countertop Backsplash
Additional Air Switch Drill	X	Yes-See Hole Location Sheet	Matte Black			
Additional R.O. Faucet Drill	X	Yes-See Hole Location Sheet	Matte Black			

PLUMBING FIXTURES		PRODUCT	COLOR	LEVEL	DETAILS
Kitchen Faucet	X	Kohler_Crue_22972	BL - Matte Black	Level 4	
Kitchen Sink	X	Neoroc Single Bowl Apron Sink K-25788-CM1	CM1 - Matte Black	Custom	
Disposal Air Switch	X	Yes - See Hole Location Sheet	Matte Black		
RO Faucet	X	Yes - See Hole Location Sheet	Matte Black		
Basement Bar Sink	X	Crue 22975-BL Bar Faucet	Matte Black	Custom	
Basement Bar Faucet	X	Neoroc 8223	CM1 - Matte Black	Custom	
Laundry Faucet	X	Kohler Simplice Laundry Faucet 22035	Matte Black	Level 2	
Laundry Sink	X	Kohler Kennon Laundry Sink K-28002-1-CM1	CM1 - Matte Black	Custom	
Primary Bath Fixtures	X	Kohler Components K-77967-2MB with K-77974-9-2MB Handles	Vibrant Brushed Moderne Brass	Custom	
Primary Bath Accessory Package	X	Moen Align	Brushed Gold	Custom	
Primary Bath Vanity Sinks	X	Kohler_Archer_K_2355	White		Split Vanities
Primary Bath Toilet	X	Archer 3551-0	White - Soft Close		Elongated - Comfort Height
Primary Bath Shower Unit		Tiled Shower with Half Ledge on Back Wall	Tiled Shower Floor		
Primary Bath Tub Unit		66x36 Kohler Sunstruck 6368-0	White	Level 1	



Primary Bath Tub Fixtures	X	Components K-77985-2MB with the K-77974-9-2MB Handles	Vibrant Brushed Moderne Brass	Custom	
Primary Bath Shower Extras	X	Body Sprays x2	Vibrant Brushed Moderne Brass	Custom	
Primary Bath Shower Extras	X	Kohler Awaken Handshower Kit - Separate Value	Vibrant Brushed Moderne Brass	Custom	
Primary Bath Mirror(s)	X	Credit and Remove Frameless Mirror			

PLUMBING FIXTURES		PRODUCT	COLOR	LEVEL	DETAILS
Main Hall Bath Fixtures	X	Kohler Venza Double Handle-K-28124	Matte Black	Level 4	
Main Hall Bath Accessory Pkg	X	Triva	Matte Black	Level 4	
Main Hall Bath Vanity Sinks	X	Kohler Caxton Rectangular 20000	White	Level 1	Double Bowl Vanity
Main Hall Bath Toilet		Wellworth 3998-0	White - Soft Close		Elongated - Comfort Height
Main Hall Bath Shower/Tub Unit	X	Fiberglass Tub with Tiled Walls	White		
Main Hall Bath Mirror(s)	X	Credit and Remove Frameless Mirror			
Powder Room Fixtures	X	Kohler Venza Single Handle-K-28126	Matte Black	Level 5	
Powder Room Accessory Pkg	X	Triva	Matte Black	Level 5	
Powder Room Vanity Sinks	X	Kohler_Archer_K_2355	White		
Powder Room Toilet	X	Archer 3551-0	White - Soft Close		Elongated - Comfort Height
Powder Room Mirror	X	Credit and Remove Frameless Mirror			
Basement Bath Fixtures	X	Kohler Venza Single Handle-K-28126	Matte Black	Level 5	
Basement Bath Accessory Pkg	X	Triva	Matte Black	Level 5	
Basement Bath Vanity Sinks	X	Kohler Caxton Rectangular 20000	White	Level 1	Double Bowl Vanity
Basement Bath Toilet		Wellworth 3998-0	White - Soft Close		Elongated - Comfort Height
Basement Bath Shower/Tub Unit	X	5ft Sterling Accord Fiberglass Shower Unit	White		Adjusted Curved Shower Rod - Matte Black
Basement Bath Mirror(s)	X	Credit and Remove Frameless Mirror			

SHOWER DOOR		DOOR STYLE	HARDWARE COLOR	GLASS TYPE	HEIGHT
Primary Bath Shower Door	X	Elite Frameless Swinging	Gold	Clear Glass	80” Tall Upgrade
Hall Bath Tub/Shower Door		Splendor Semi-Frameless Bi-Pass	Matte Black	Clear Glass	
Basement Bath Shower Door	X	Splendor Semi-Frameless Bi-Pass	Matte Black	Clear Glass	72” Height Standard

TILE		PRODUCT	COLOR	GROUT COLOR	LEVEL	DETAILS/TILE PATTERN
Kitchen Backsplash	X	Full Height Quartz Splash	Calcatta Idillio		Level 3	
Schluter Edge For Backsplash		Schluter Metal Edging	Black			
Basement Bar Backsplash	X	Daltile Pietra Divina - Natural Stone Mosaic	Nero Marquina CupolaM462	Charcoal	Custom	Tile Installed all Around Window to Wine Cellar - See Tile Drawing for Details
Schluter Metal Edging for Basement Bar	X	Schluter Metal Edging	Black			
Primary Bath Shower Tile - Walls	X	Virg Tile Malta 12x24	Oro (STIMLOR1224N)	Snow White	Level 1	Tile Installed 30/70 Vertical - See Tile Drawing for Details

Primary Bath Shower Tile - Floor	X	Shaw Chateau 3" Hex (CS56P)	100	Snow White	Custom	
Primary Bath Decorative Accent Tile	X	Soho Mosaics Glazed Porcelain Scallop Glossy Mosaic	Cloud Blue	Snow White	Custom	Tile Installed Vertical Behind & on side walls of Tub from floor up to ceiling - see tile drawing for details
Schluter Edge for Shower Wall Tile		Schluter Metal Edging	White			
Main Bath Niche Accent Tile	X	Daltile Uptown Glass 1" Hex	Matte Ebony	Ash	Level 2	In Back of Tiled Niche
Main Hall Bath Shower Tile Walls	X	Daltile Mythology Undulated 4x12	Santorini	Ash	Level 4	Tile Installed Non Staggered Horizontal - See Tile Drawing for Details

FLOORING		PRODUCT	COLOR	GROUT COLOR	LEVEL	DETAILS/TILE PATTERN
Flooring Registers		Floor Register	Brown	N/A	N/A	
Foyer	X	Adura Rigid 5mm LVP	Swiss Oak Truffel		Level 4	
Kitchen	X	Adura Rigid 5mm LVP	Swiss Oak Truffel		Level 4	
Dinette/Breakfast	X	Adura Rigid 5mm LVP	Swiss Oak Truffel		Level 4	
Kitchen Pantry	X	Adura Rigid 5mm LVP	Swiss Oak Truffel		Level 4	
Great Room	X	Adura Rigid 5mm LVP	Swiss Oak Truffel		Level 4	
Flex Room	X	Adura Rigid 5mm LVP	Swiss Oak Truffel		Level 4	
1st Floor Hall	X	Adura Rigid 5mm LVP	Swiss Oak Truffel		Level 4	
Primary Bathroom	X	Virg Tile Malta 12x24	Oro (STIMLOR1224N)	Bright White	Custom	Tile Installed 30/70 Parallel to Vanity - See Tile Drawing for Details
Main Hall Bathroom	X	MSI Kenzzi 8x8	Paloma	Bright White	Level 3	Tile Installed Square
Powder Room	X	Adura Rigid 5mm LVP	Swiss Oak Truffel		Level 4	
Primary Bedroom	X	Adura Rigid 5mm LVP	Swiss Oak Truffel		Level 4	
Bedroom #2	X	Dreamweaver Modern Edge 2825 Carpet	6309 Champagne Fizz		Level 3	8# Carpet Pad
Bedroom #3	X	Dreamweaver Modern Edge 2825 Carpet	6309 Champagne Fizz		Level 3	8# Carpet Pad
Stairs to Basement	X	Dreamweaver Select 8910 Suffolk Carpet	8000 Columbia		Level 5	8# Carpet Pad
Laundry	X	Adura Rigid 5mm LVP	Swiss Oak Truffel		Level 4	
Rear Foyer	X	Adura Rigid 5mm LVP	Swiss Oak Truffel		Level 4	
Finished Basement	X	Adura Rigid 5mm LVP	Swiss Oak Truffel		Level 4	
Work Out Room - Basement	X	Adura Rigid 5mm LVP	Swiss Oak Truffel		Level 4	
Basement Bath	X	Daltile Marble Attache 12x24	Nero Matte		Level 4	Tile Installed 30/70 Parallel to Vanity - See Tile Drawing for Details
Basement Bedroom 4	X	Dreamweaver Select 8910 Suffolk Carpet	8000 Columbia		Level 5	8# Carpet Pad
Flooring Notes		All LVT Flooring is 5.5mm (1/4")				

APPLIANCES		TYPE	COLOR	OTHER DETAILS
Microwave	X	CWL112P3RD5		
Dishwasher	X	CDT845P2NS1		
Basement Dishwasher	X	CDT845P2NS1		
Refrigerator	X	CSE22DP3PD1 - CXQB4H4PNBZ Handles		
Cooktop	X	C2Y486P3TD1 - CXPR8HKPTBZ Knobs		
Primary WIC Laundry	X	PFQ97HSPVDS		
Laundry	X	Washer: PFW950SPTDS - Dryer: PFD95ESPTDS		
Range/Wall Oven				
Range Hood				

Complete Checklist

	Color Addendum Reviewed and Signed by Customer
	Color Selection Change Order Signed by Customer
	Cabinet Layout Reviewed and Signed
	Granite, Wood Floring & Natural Stone Disclosure Read & Singed (if applicable)
	Sink/Faucet Info Completed (Disposal, Faucet, and Air Gap Located)
	Backsplash Drawings Completed (if applicable)
	Tile Wall & Flooring Drawings Completed (if applicable)
	Laminate Shelving Package Layouts - Signed by Customer (if applicable)
	Selections Allowance(s) Removed from Contract (if applicable, except window treatments and Landscaping)
	Photos of Selections

Note: X Indicates that a Selections Item was added to the options.

Note: A \$350 Change Request Fee is applicable on all changes made after the selections deadline. We understand that there is no guarantee that changes can be made after this point. Any approved change request may involve a delay in delivery. We understand and accept these selections as part of our home building agreement with Tim O'Brien Homes, INC. In the event that any of our selections become unavailable, we agree to select the replacement(s) as offered by Tim O'Brien Homes, Inc. within (5) days of notification. If for any reason, a replacement(s) is not selected by us within (5) days of notification, we understand that Tim O'Brien Homes, Inc. will select the replacement(s) for us.

Builder: Tim O’Brien Homes Inc.

CUSTOMER: Please Sign Below

By:

Date:

By:

Date:

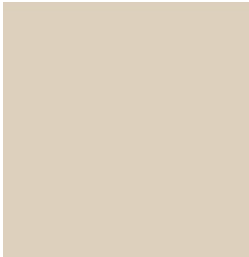
By:

Date:



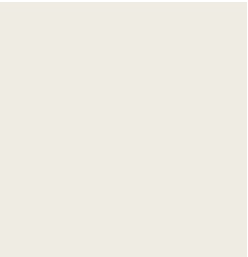
# 2024 PARADE HOME

## Great Room, Kitchen, Family Room and Game Room



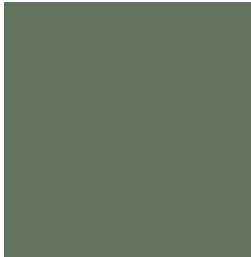
SW7565 Oyster Bar  
Color Number: SW7565  
Color Display Locator: 286-C1  
Color Family Name: CIC/Timeless  
Sheen: Flat

## Flex Room Accent Wall



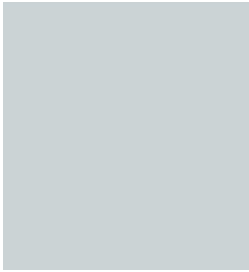
SW7551 Greek Villa  
Color Number: SW7551  
Color Display Locator: 254-C1  
Color Family Name: White and Pastel  
Sheen: Semi Gloss

## Flex Room



SW6187 Rosemary  
Color Number: SW6187  
Color Display Locator: 215-C6  
Color Family Name: Green  
Sheen: Flat

## Primary Bath



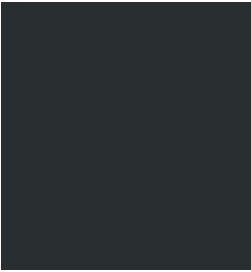
SW9136 Lullaby  
Color Number: SW9136  
Color Display Locator: 221-C1  
Color Family Name: Blue  
Sheen: Flat

## Primary Bedroom



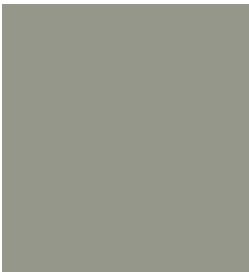
SW9141 Waterloo  
Color Number: SW9141  
Color Display Locator: 221-C6  
Color Family Name: Blue  
Sheen: Flat

## Foyer Box Ceiling



SW6994 Greenblack  
Color Number: SW6994  
Color Display Locator: 251-C6  
Color Family Name: Neutrals  
Sheen: Flat

## Laundry, Rear Foyer, Bedroom 2 and Wine Cellar



SW9130 Evergreen Fog  
Color Number: SW9130  
Color Display Locator: 215-C4  
Color Family Name: Green  
Sheen: Flat

## Fitness Room and Basement Bedroom



SW9140 Blustery Sky  
Color Number: SW9140  
Color Display Locator: 221-C5  
Color Family Name: Blue  
Sheen: Flat